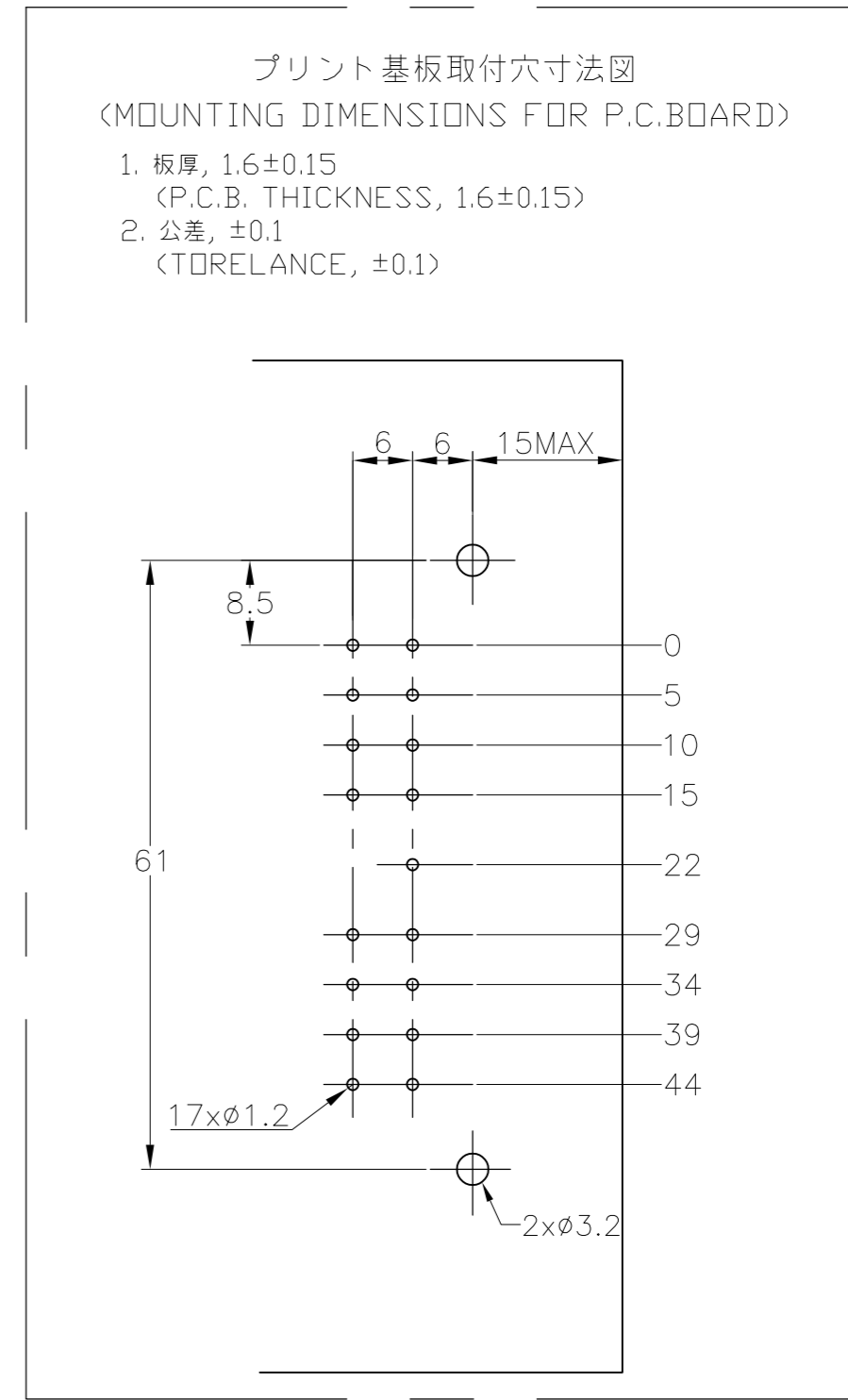
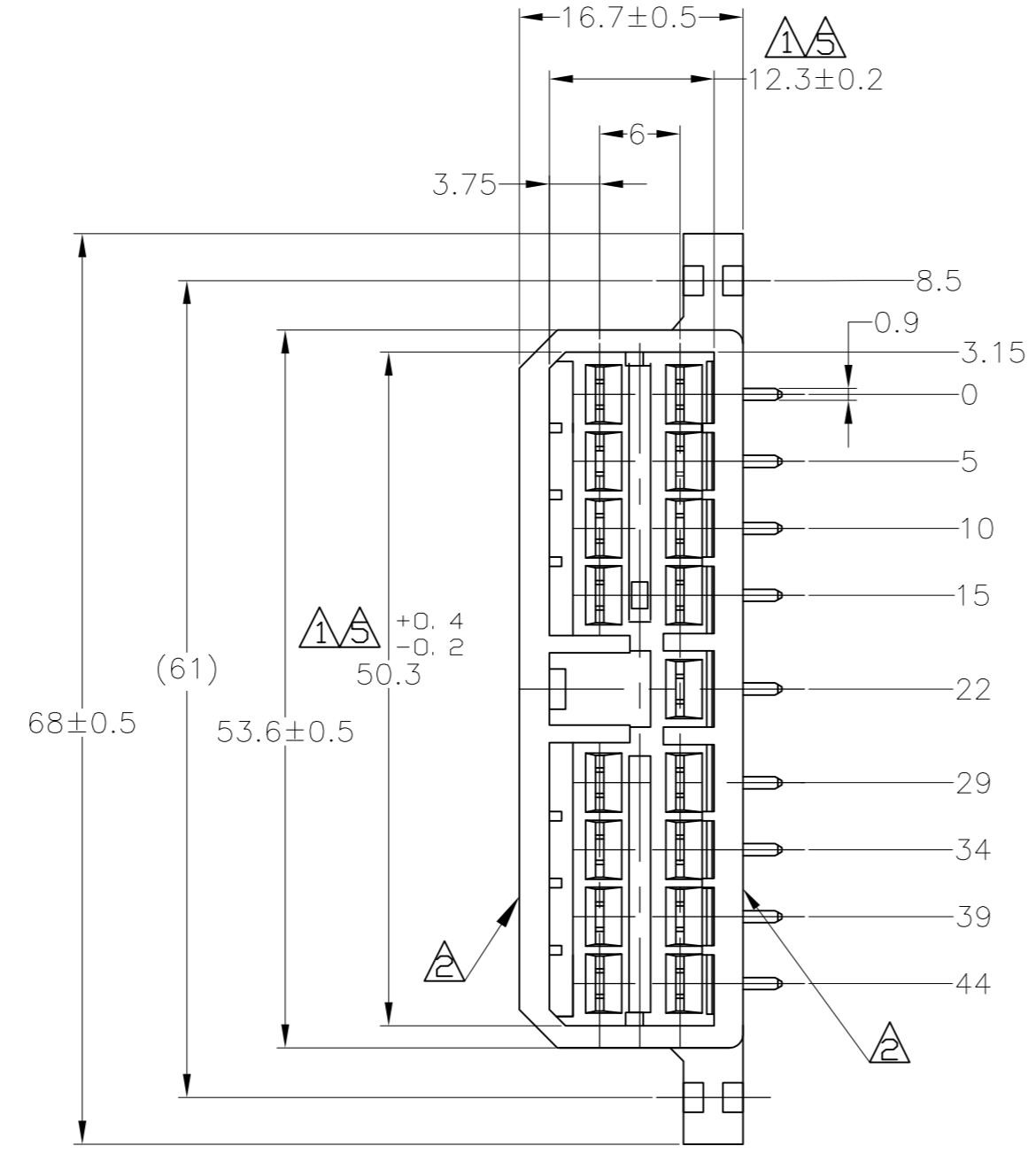
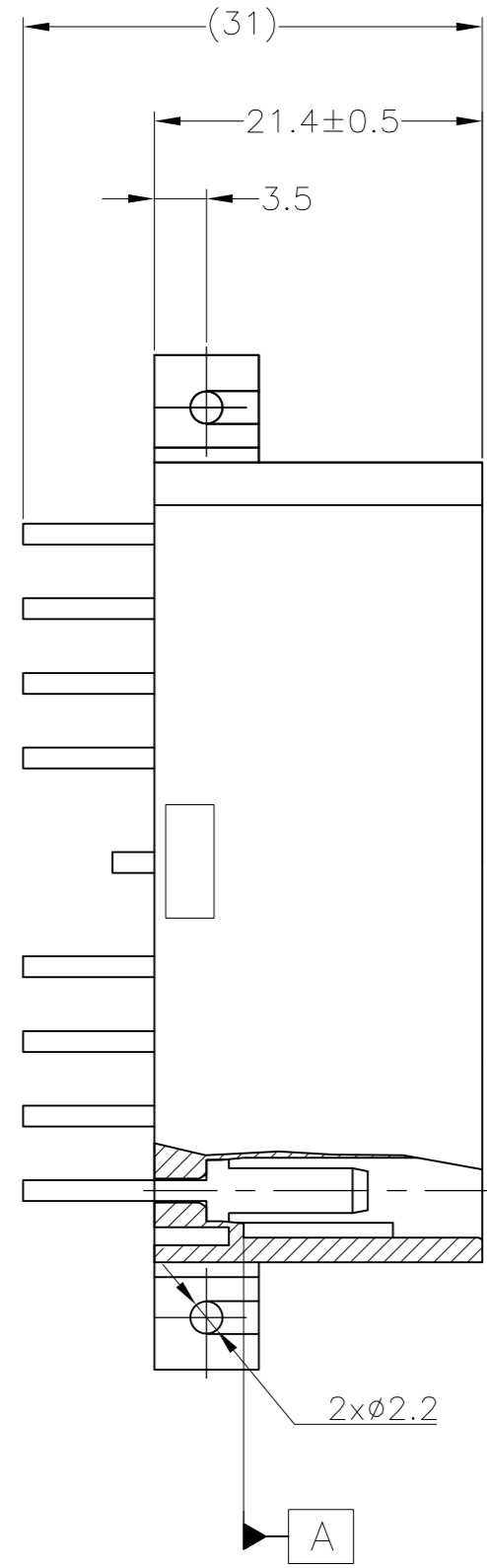
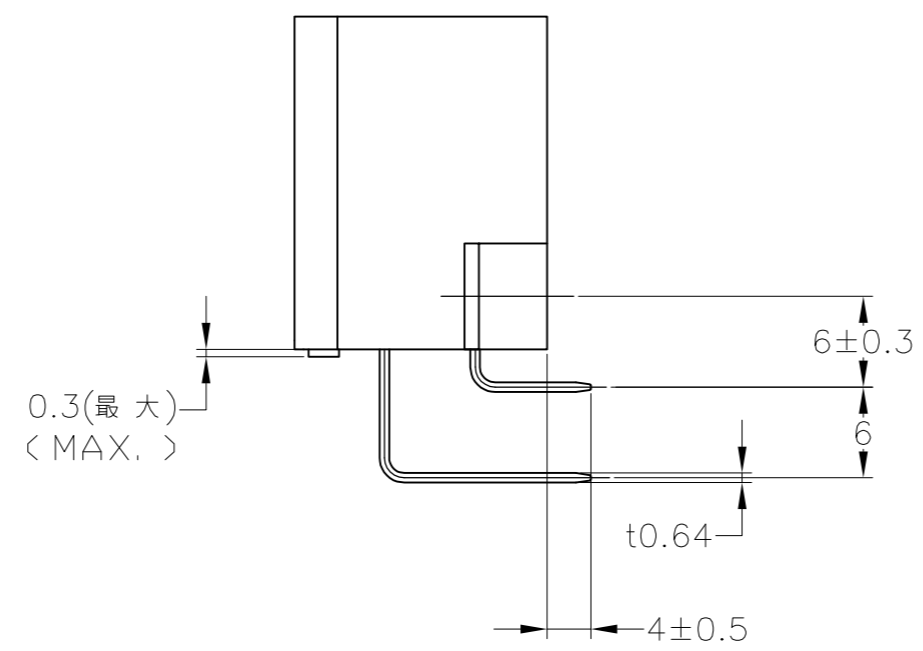


THIS DRAWING IS UNPUBLISHED. RELEASED FOR PUBLICATION MAY, 2017.
 © COPYRIGHT 2017 By Tyco Electronics Japan G.K. ALL RIGHTS RESERVED.

REVISIONS				
P	LTR	DESCRIPTION	DATE	APVD
F6	REVISED	変更 ECR-16-002841	18MAY2017	KF TK



- 注記:
- ① 相手ハウジングと所定の機能を満たしてかん合できること。
 - ② フードの反りは0.2以内。
 - ③ プリント基板への取付けは JIS B1115 M3 1種のタッピンネジで締め付けた後はんだ付けする。
 - ④ 適用製品規格 ; 108-5093
 - ⑤ [A] 面より2mmの範囲で測定のこと。
 - ⑥ 相手ハウジングとのかん合力は、29.4N以下
但し、リセプタクルコンタクトは含まない。



- NOTE :
- ① IN COUPLING WITH THE PLUG HOUSING MATING SATISFIES FUNCTION
 - ② WARPAGE 0.2 MAX.
 - ③ SOLDERING AFTER MOUNTING P. C. BOARD BY 3mmDIA TAPPING SCREW, SPECIFIED IN JIS B1115
 - ④ PRODUCT SPEC NO. 108-5093
 - ⑤ TO BE MEASURED WITHIN 2mm FROM [A]
 - ⑥ IN COUPLING WITH THE PLUG HOUSING MATING FORCE 29.4N MAX. WITHOUT RECEPTACLE CONTACT

TOLERANCE UNLESS OTHERWISE SPECIFIED: 一般公差

0 <= X <= 10	: ±0.2
10 <= X <= 30	: ±0.25
30 <= X <= 100	: ±0.3
ANGLE	: ±3°

SELECTIVE-TIN (MATTE)	SELECTIVE GOLD (0.38μm MIN.)	NATURAL	2-5171366-1
SELECTIVE-TIN (MATTE)	SELECTIVE GOLD (0.76μm MIN.)	NATURAL	1-5171366-1
TIN-LEAD	SELECTIVE GOLD (0.38μm MIN.)	GREEN	2-171366-4
TIN-LEAD	SELECTIVE GOLD (0.38μm MIN.)	NATURAL	2-171366-1
PRE-TIN	PRE-TIN BRASS	GRAY	171366-6
	PRE-TIN	GREEN	171366-4
	PRE-TIN	BROWN	171366-3
	PRE-TIN	BLACK	171366-2
	PRE-TIN	NATURAL	171366-1
SOLDERING SIDE 半田付け部	CONTACT SIDE 接触部側	COLOR 色	PART NUMBER 製品型番
CONTACT FINISH コンタクト仕上			

THIS DRAWING IS A CONTROLLED DOCUMENT.

DWN T.SHINOHARA 31AUG07
 CHK K.BETSUI 31AUG07
 APVD K.BETSUI 31AUG07

TE Connectivity

17POSITION H TYPE CAP HOUSING
 MULTI-INTERLOCK CONNECTOR
 WIRE TO PCB

SIZE A2 CAGE CODE 00779 DRAWING NO. 171366 RESTRICTED TO

MATERIAL HSG: 66 NYLON CONTACT: BRASS FINISH 仕上

WEIGHT - SCALE 2:1 SHEET 1 OF 1 REV F6